

Online Resources

most commonly used at the Trinity
College Dublin Geological Museum

in particular for localities in **Ireland**,
and with a **geological** bias.



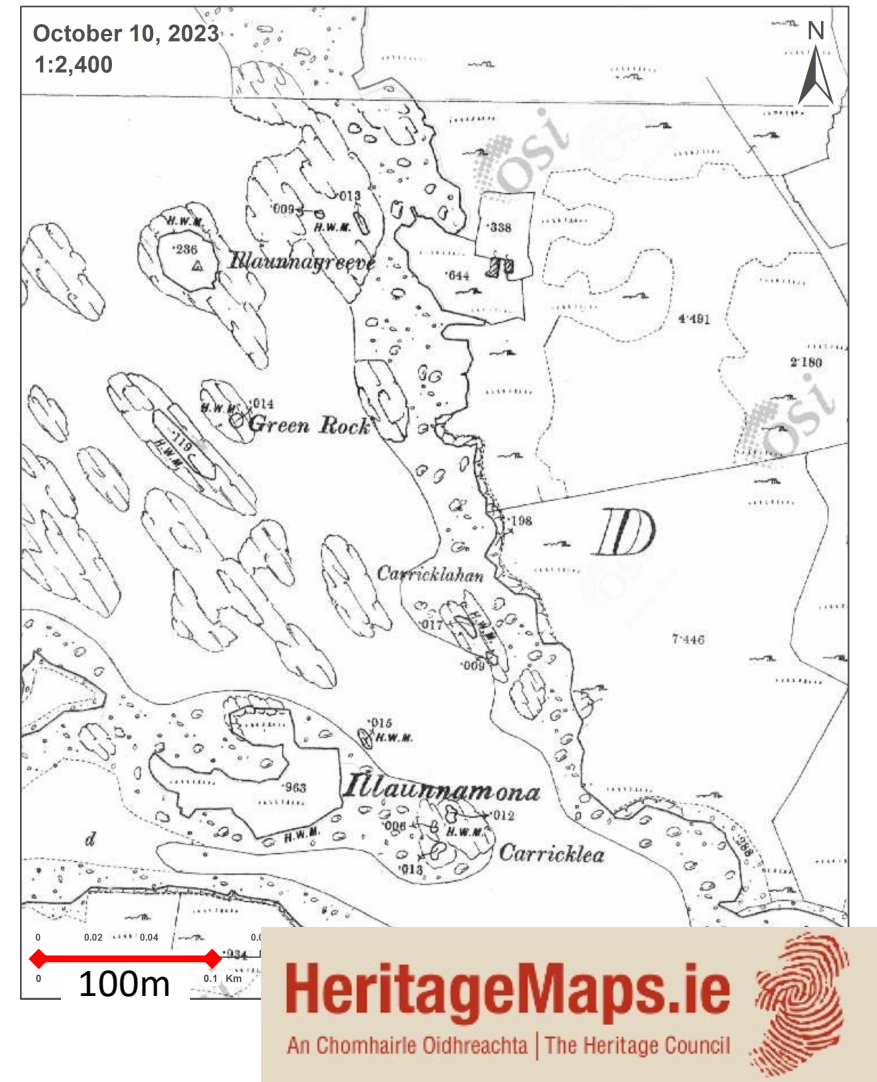
Georeferencing Irish localities

Ireland is a densely named country, and placenames have long histories in two languages.

This means that localities can be precisely described, but also adds complexity to the georeferencing process.

Two particularly useful resources are 1) **Logainm** placename database and 2) Historic **6" and 25" Ordnance Survey Ireland (OSI) maps**, which are available as base maps through various portals (as shown in the following slides).

These provide a level of detail which is not always available in modern digital maps, and they are especially useful in a museum setting where collections span multiple centuries.



However

- Logainm is a placenames database, which uses OpenStreetMap but has limited mapping capabilities
- The GIS portals which allow access to the historic OSI maps can't be searched by placename and have less useful modern base maps (in most cases).

Therefore, we often use up to four resources at a time – one for place names, one for historic maps and geology layers, one for modern maps and making measurements, and one for offsets/uncertainties (the georeferencing calculator).

The following slides illustrate the benefits, limitations and key functionality of the online resources we are using.



Georeferencing Calculator

s only (e.g., 27°34'23.4" N, 121°56'42.3" W)

Logainm <https://www.logainm.ie/en/>



“The Placenames Database of Ireland: This is a comprehensive management system for the placenames data, records and research of the State.”

BENEFITS	LIMITATIONS
The best for finding Irish placenames – historical names, names in Irish and English etc.	No measurement or drawing tools
Includes some information for Northern Ireland	No geology
Provides lat-long of ‘centrepoin’t	No OSI 6” or 25” base layers
Polygons for most localities	
Shows choice of features with the same name	
Gives coordinates in ITM, Irish Grid and WGS84	

Best for finding places in Ireland – doesn’t have the mapping functionality

Centrepoint
(note -
sometimes the
centrepoint of a
larger parent
feature)

Centrepoint

 **52.131, -10.4544**

↓ latitude, ↔ longitude

IRISH GRID (WITH LETTER)

Q 31985 00466

IRISH GRID (WITHOUT LETTER)

31986, 100466

IRISH TRANSVERSE MERCATOR (ITM)

431972, 600523

API

Open data

Application programming interface (API)

API link

<https://www.logainm.ie/api/v1.0/1394329>



Available under [Creative Commons Attribution 4.0 International \(CC BY 4.0\)](#)

API key required to access data

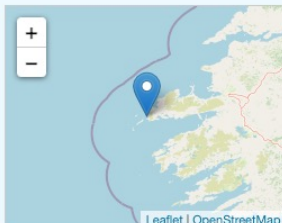
[More about the Logainm API](#)

Linked Logainm

Formats: [RDF](#) | [RDF N3](#) | [RDF JSON](#) | [RDF XML](#)

Operated by [Digital Repository of Ireland](#)

[More about Linked Logainm](#)




Dún Chaoin/Dunquin

civil parish

COUNTY **Ciarraí/Kerry**

BARONY **Corca Dhuibhne/Corkaguiny**

[More](#)

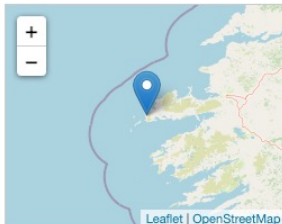


Dún Chaoin/Dunquin

electoral division

COUNTY **Ciarraí/Kerry**

[More](#)



Dún Chaoin/Dunquin

population centre

COUNTY **Ciarraí/Kerry**

BARONY **Corca Dhuibhne/Corkaguiny**

CIVIL PARISH **Dún Chaoin/Dunquin**

TOWNLAND **Baile na Rátha Thuaidh/Ballynarah North**

[More](#)

Versions of the same name

Suggests similar
placenames



Similar placenames · [Drumquin](#) · [Dunbin](#) · [Dunedin](#) · [Dunguib](#) · [Dunmain](#) · [Dinin](#) · [Duncrun](#) · [Dundian](#) · [Dunsink](#) · [Dunurlin](#)

Geohive

<https://www.geohive.ie/>

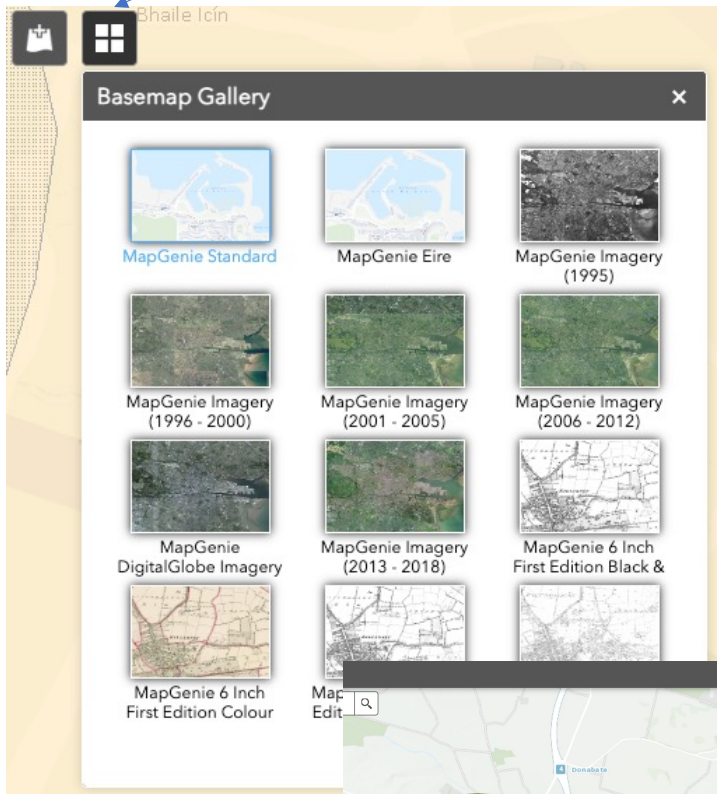


“Ireland's National Geospatial Data Hub. Search, view, and access the State's authoritative geospatial information via interactive map applications and data catalogues.”

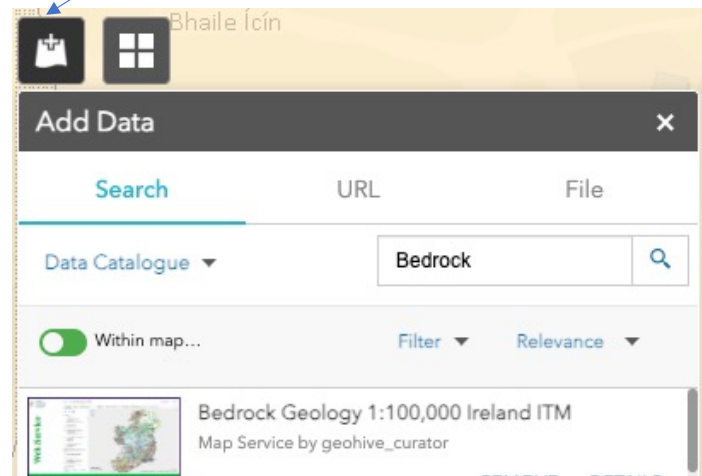
BENEFITS	LIMITATIONS
OSI Historic 6” and 25” base layers	Can’t search for placenames (unless townland or Eircode)
GSI geology bedrock layers	Modern MapGenie base map lacks detail compared to OpenStreetMaps or Google
Add shapes and points	Can’t edit or adjust shapes/points once drawn.
Measuring tool	No detail for Northern Ireland
Multiple coordinate systems (ITM, Irish Grid and WGS84)	

Great for the combination of bedrock Geology and historic OSI maps – but no useful search functionality, prepare to spend a lot of time zooming and scrolling.

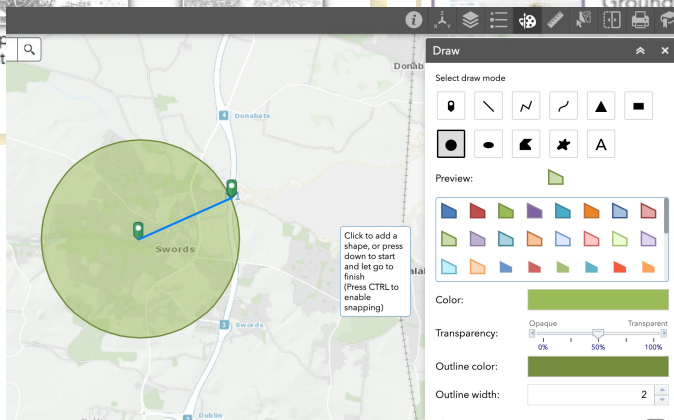
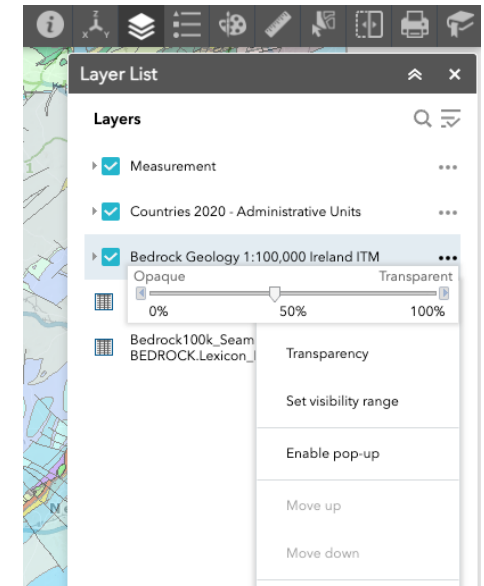
Choice of basemaps. The most useful are the OSI 6" and 25" maps



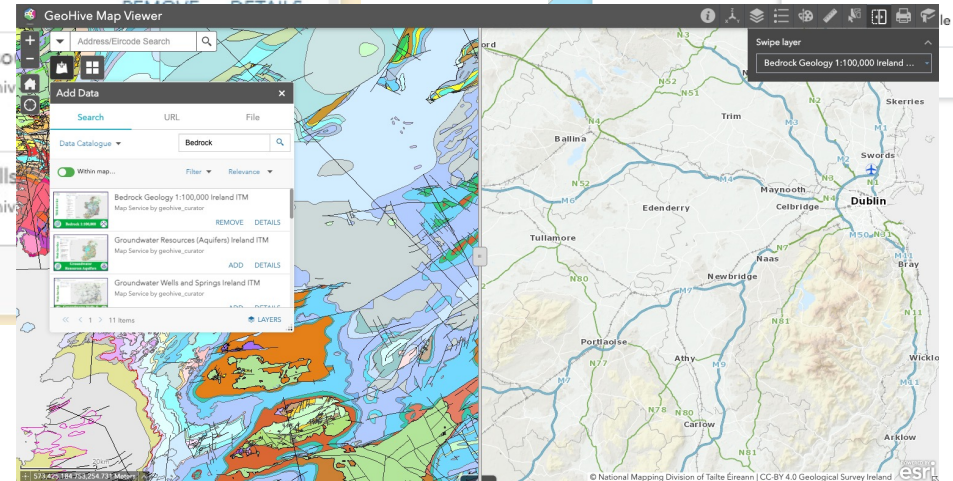
Choice of layers, including bedrock geology, active quarries, geological heritage



Set layer transparency



Draw and measure



Toggle between layer and base layer

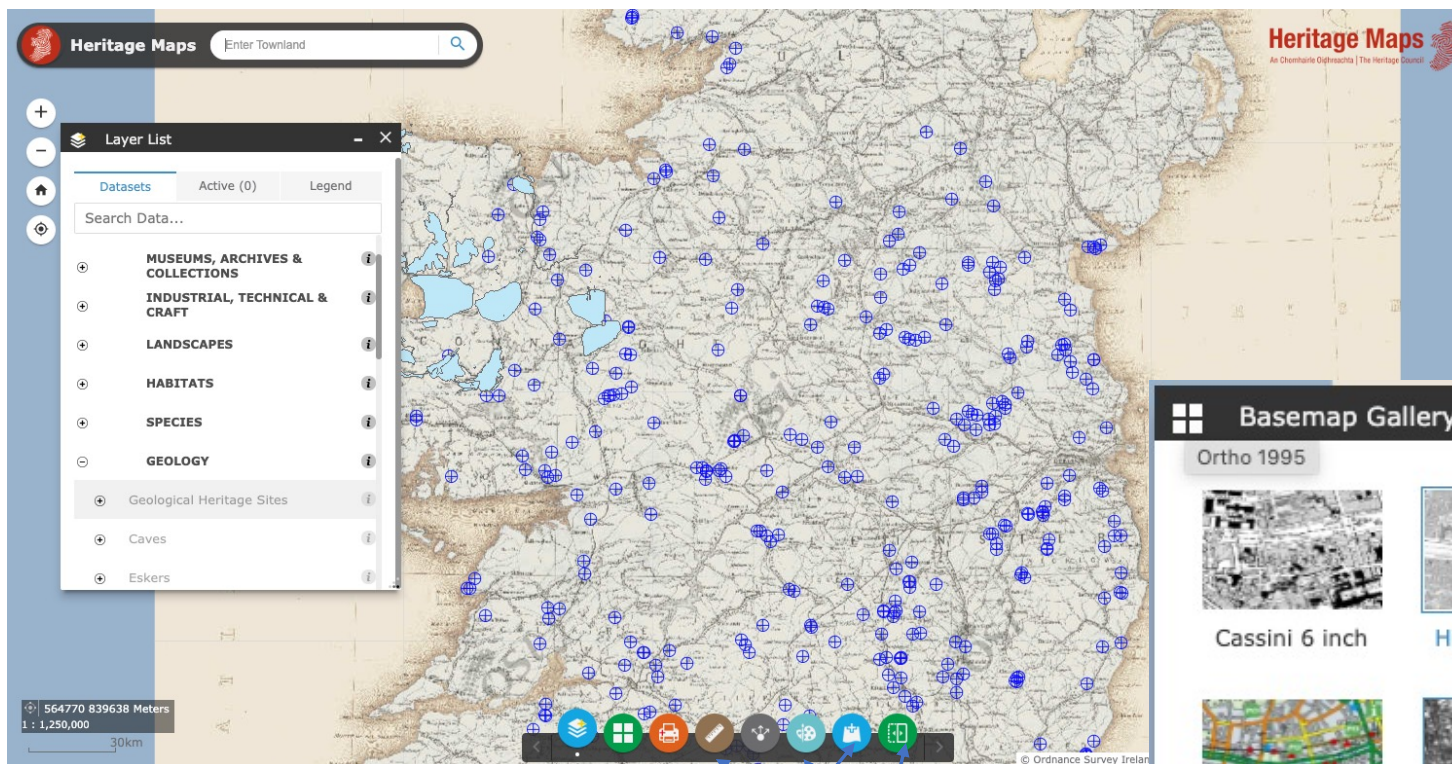
Heritage Maps <https://heritagemaps.ie/>



“The Heritage Maps viewer is a web-based spatial data viewer which focuses on the built, cultural and natural heritage around Ireland and off shore. [...] Heritage Maps can be used to create customized maps, measure area and distance, identify points of interest and study local flora and fauna, as well as many other uses, both recreational and research-based.”

BENEFITS	LIMITATIONS
OSI 6" and 25" base layers	Search only by townland
OSI Discovery base layer	Can't edit or adjust shapes/points once drawn.
Geology bedrock layers	No detail for Northern Ireland
Can add shapes and points	
Measuring tool	
Multiple coordinate systems (ITM, Irish Grid and WGS84)	

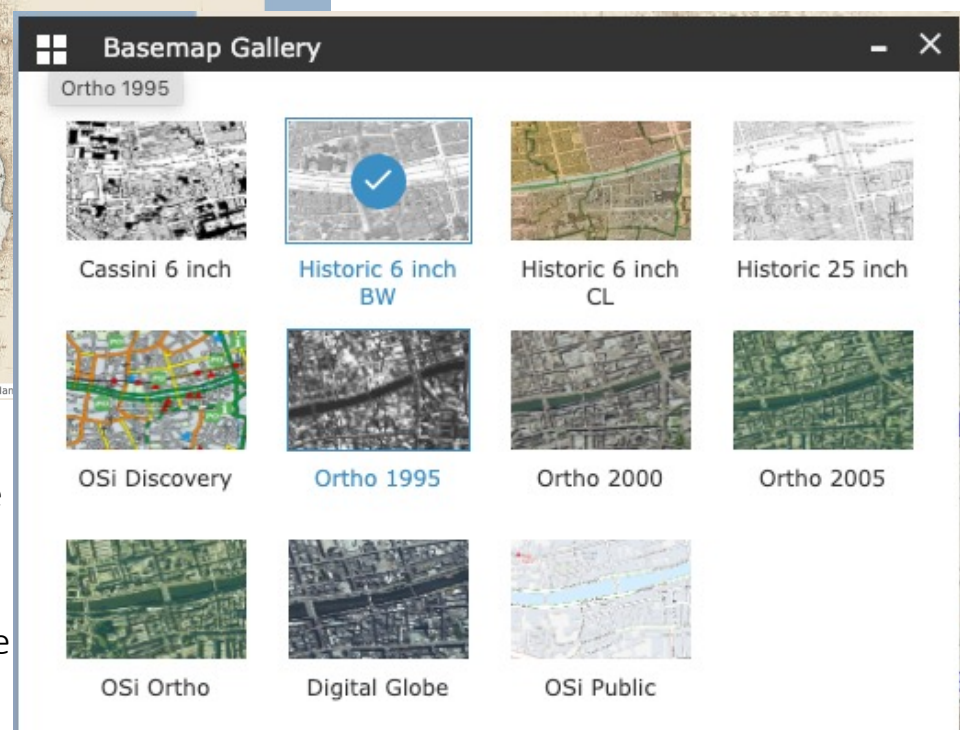
Much the same as Geohive - but with some extra base layers which are useful. More focused on relevant resources (heritage, geology) and can therefore be quicker to navigate than Geohive.



Historic OSI 6" color base layer
+ active layers of GSI Geological Heritage Sites from Mayo (light blue) and Active Quarries (dark blue)

Possible to add data – from online ArcGIS libraries, or your own shapefiles/geojson etc. (also available on Geohive)

Draw, measure and toggle between data layers and base layer (as in Geohive)



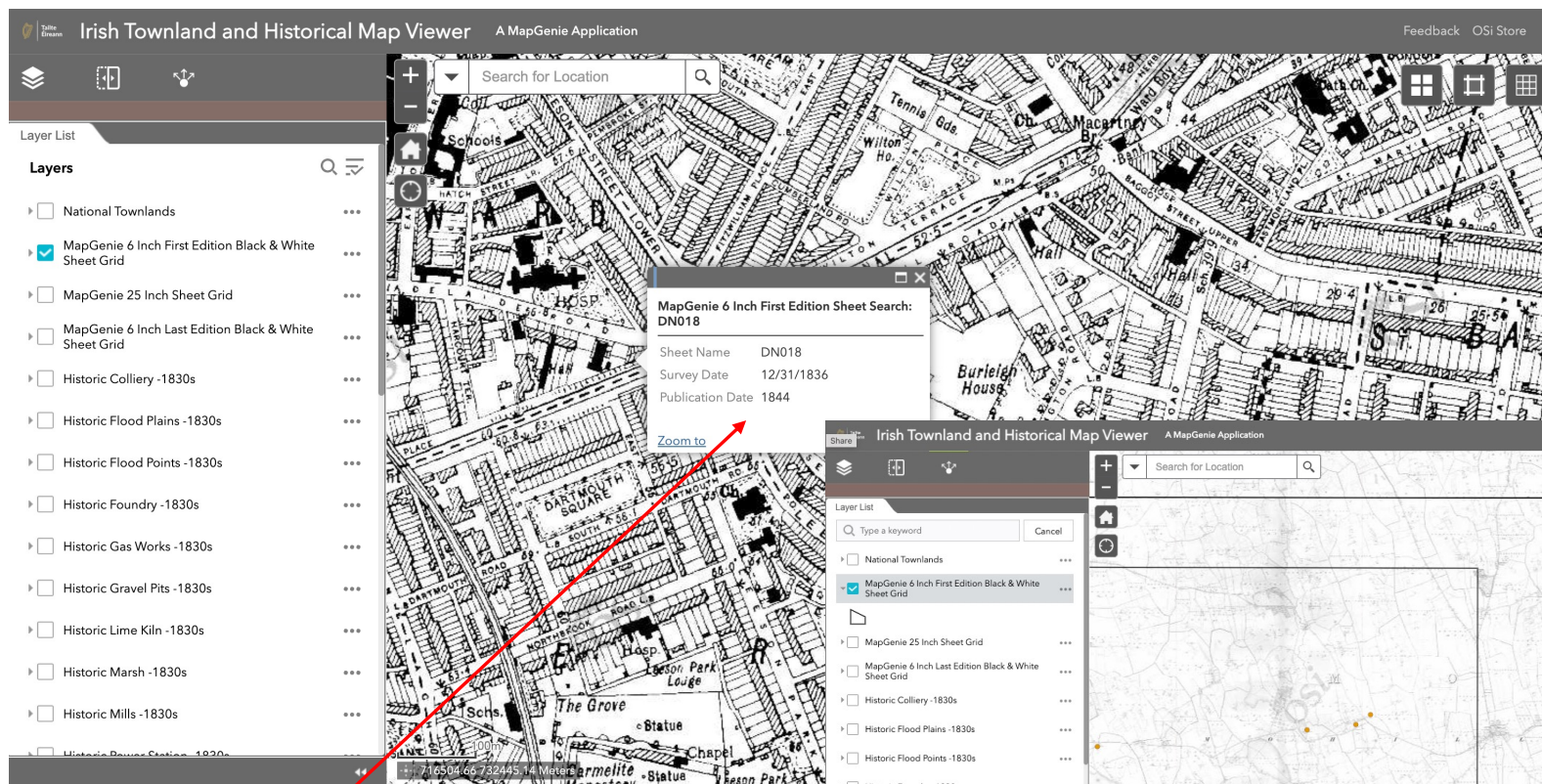
Base layers

Irish Townland and Historic Map Viewer

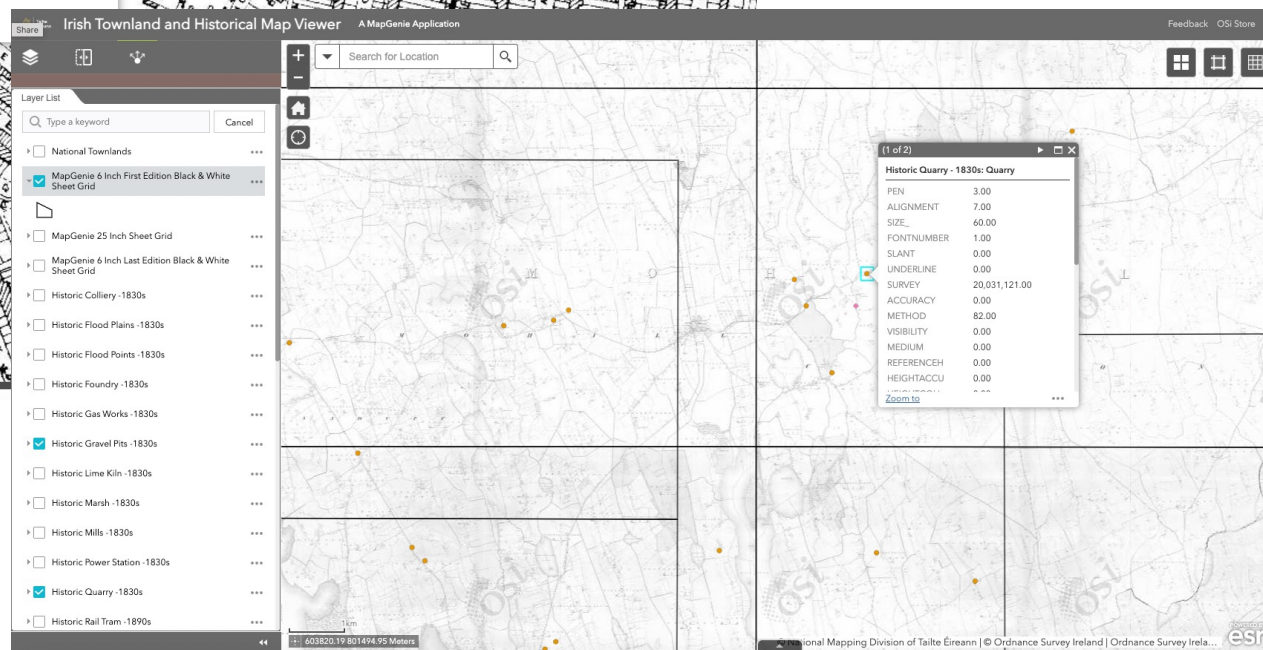
“For users particularly interested in OSi Historic Mapping, we have developed the Historic Maps & Townland viewer which enables users to search for Townlands, view historical features, and choose from a set of historical and current basemaps.” <https://osi.maps.arcgis.com/apps/webappviewer/index.html?id=bc56a1cf08844a2aa2609aa92e89497e&extent=715366.6263%2C731368.3537%2C715971.8619%2C731744.7243%2C2157>

BENEFITS	LIMITATIONS
OSI 6” and 25” base layers	Search only by townland
Historic data layers (e.g., locations of Quarries from 1830s OSI maps)	Modern MapGenie base map lacks detail compared to OpenStreetMaps or Google
Additional metadata e.g., dates of survey and publication of historic map sheets	No measurements or drawing tools
	No detail for Northern Ireland
	No geology

Extra metadata available about base layers, and additional data layers which are not available elsewhere – but can’t make measurements, and no geology layers.



Survey and publication date



View including historic quarries and gravel pit layers, and 6" map sheet boundaries marked

Geolocate

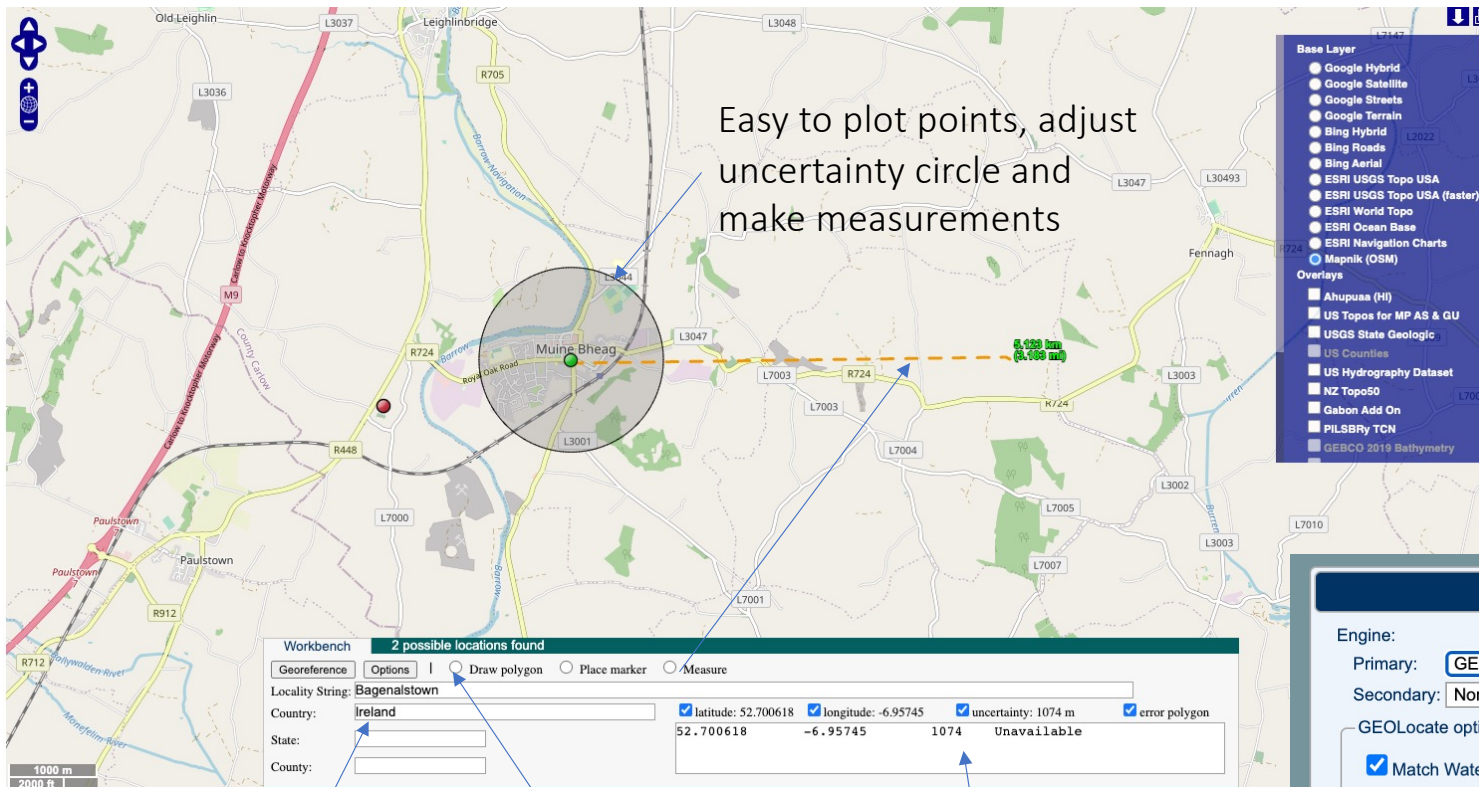
<https://www.geo-locate.org/web/WebGeoref.aspx>



“A Platform for Georeferencing Natural History Collections Data. The GEOLocate project is an effort to develop software and services for translating textual locality descriptions associated with biodiversity collections data into geographic coordinates.”

BENEFITS	LIMITATIONS
Base layers include Google/OpenMaps	No Irish geology
Global (but best for United States)	Not great for Irish placenames/counties
Easy way to get the geographic radial	
Direct access through plugin for Arctos (and other natural history database software)	
Collaborative georeferencing possible	
Easy to measure and draw polygons	
Plots offsets	

Great for plotting a point measuring and getting the geographic radial - not ideal for Irish localities



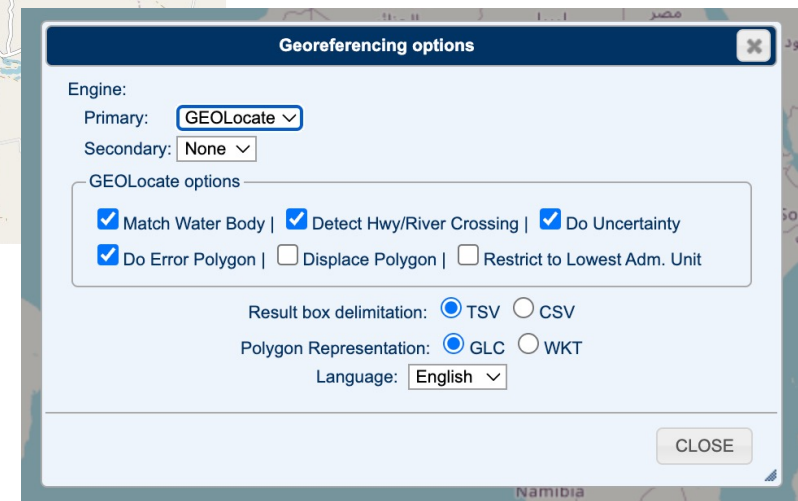
Useful modern base layers, including google, bing and OpenStreetMaps

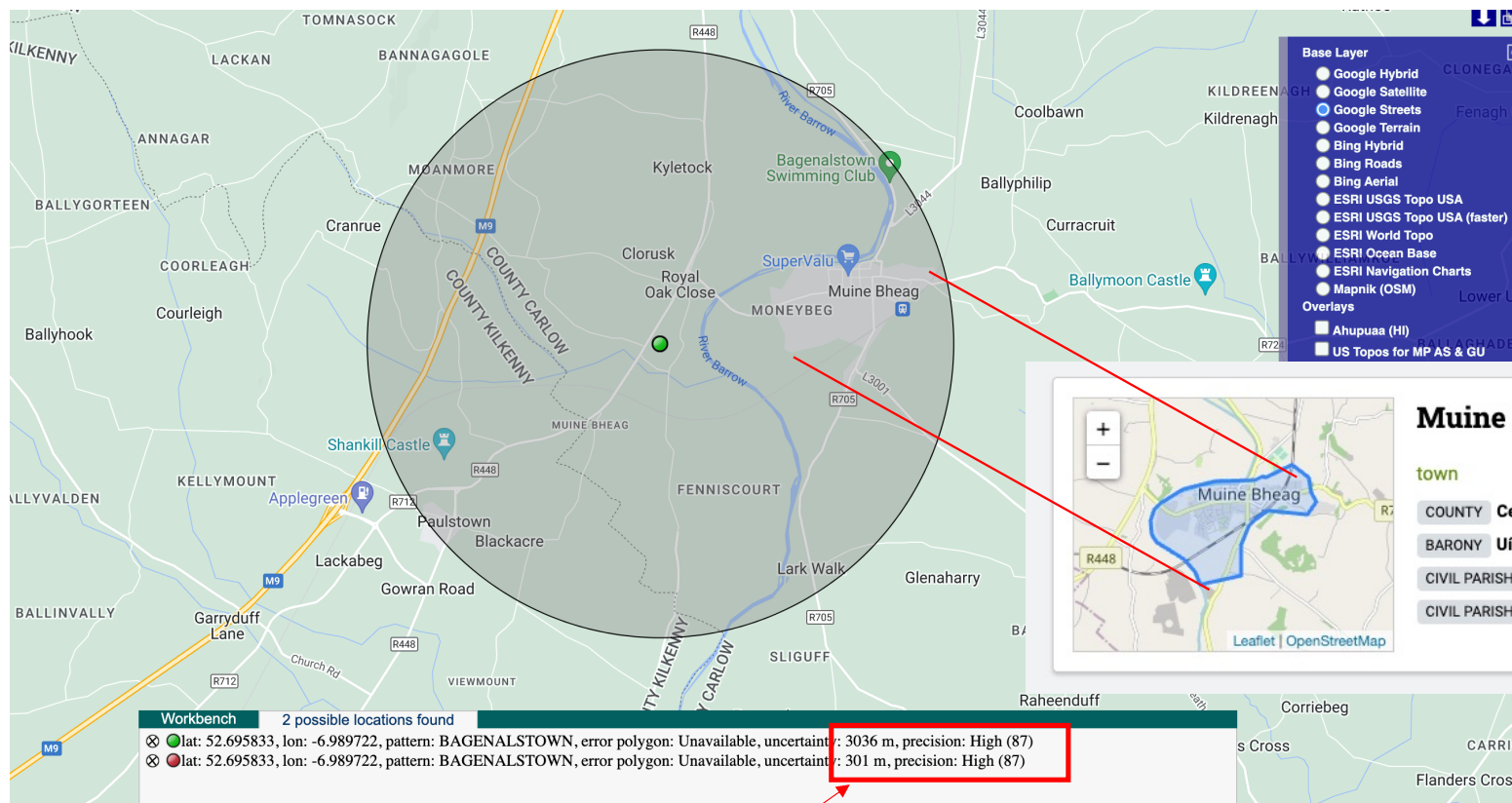


Georeferencing by locality string

Easy to draw polygon

Easy to copy data into spreadsheets/database





Muine Bheag/Muine Bheag (Bagenalstown)

town

COUNTY **Ceatharlach/Carlow**
 BARONY **Uí Dhróna Thoir/Idrone East**
 CIVIL PARISH **Dún Leicne/Dunleckny**
 CIVIL PARISH **Slí Dhubh/Sliguff**

More

Logainm version of
Bagenalstown town

Most Irish localities require further research

Example: Bagenalstown (= Muine Bheag) as plotted by Geolocate – the point is close but doesn't correspond to either the townlands or the town with that name.

Note that **3036m** and **301m** are **default uncertainties**. All Irish counties are plotted with the default uncertainty of 3036m (which much smaller than the actual uncertainty).

Additional resources

Mindat

Latitude & Longitude (WGS84):	49° 45' 34" North , 13° 50' 6" East
Latitude & Longitude (decimal):	49.75953,13.83510
GeoHash:	G#: u2cg4f6qj
GRN:	N34E07
Type:	Mine
Köppen climate type:	Cfb : Temperate oceanic climate

Nearest Settlements:	Place	Population	Distance
	Zaječov	1,341 (2018)	1.7km NNE
	Olešná	405 (2018)	2.9km NW
	Těně	230 (2018)	2.9km WSW
	Jivina	170 (2018)	3.8km N
	Cheznovice	729 (2018)	4.2km WNW
Mindat Locality ID:	762		
Long-form identifier:	mindat:1:2:762:6		
GUID (UUID V4):	59a7e257-b4c6-434a-a726-d862aead28cd		

Hrbek Mine, Svatá Dobrotivá (St Benigna), Zaječov, Beroun District, Central Bohemian Region, Czech Republic

This page is currently not sponsored. [Click here to sponsor this page.](#)

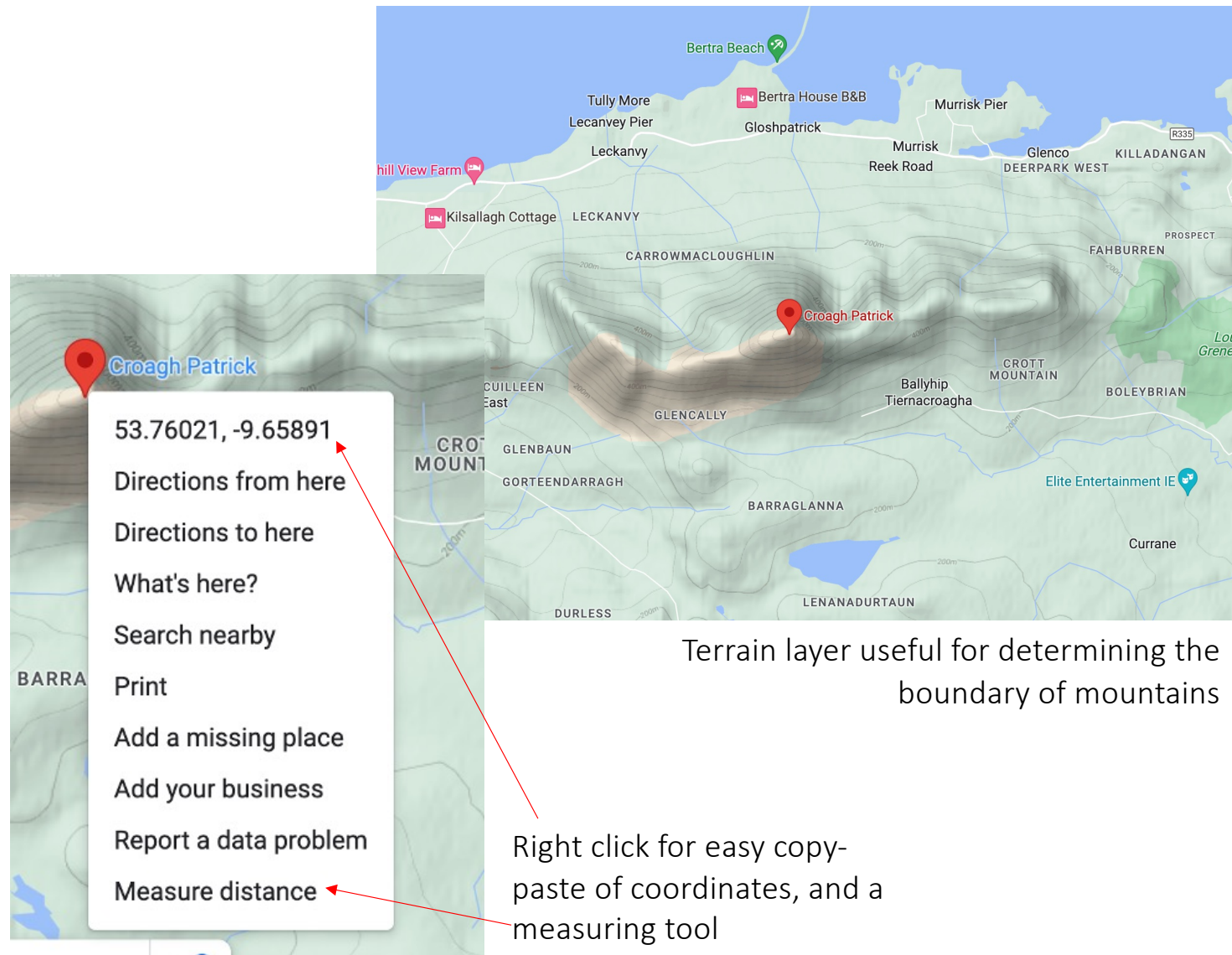
Photos Maps Search

Dufrénite
Hrbek Mine, Svatá Dobrotivá, Zaječov, Beroun District, Central Bohemian Region, Czech Republic

Dufrénite
Hrbek Mine, Svatá Dobrotivá, Zaječov, Beroun District, Central Bohemian Region, Czech Republic

Beraunite
Hrbek Mine, Svatá Dobrotivá, Zaječov, Beroun District, Central Bohemian Region, Czech Republic

Google



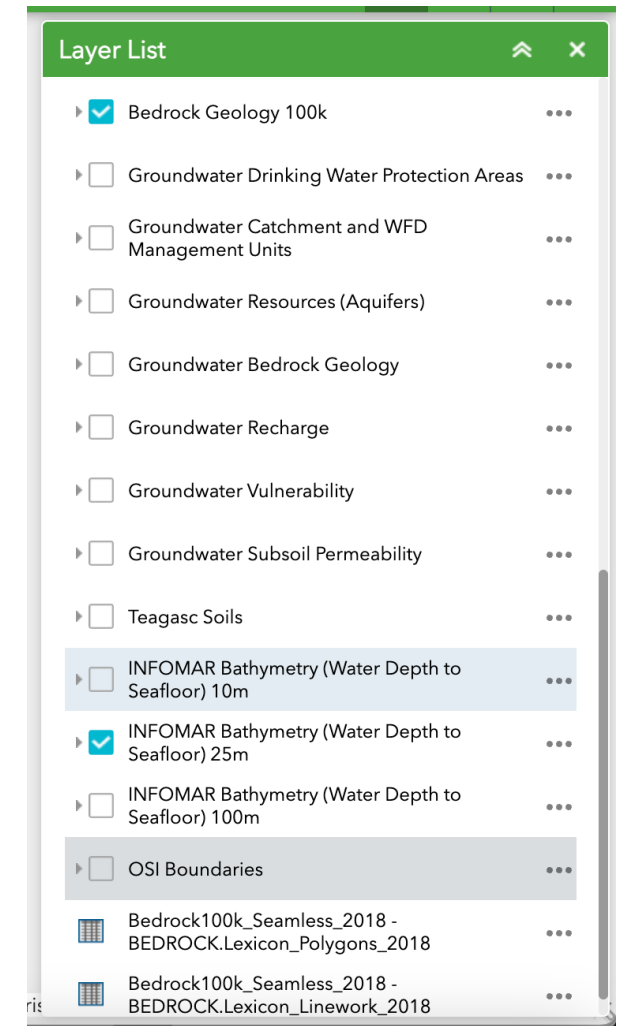
The screenshot shows the OpenStreetMap web application. The main map area displays a topographic view of a coastal region with contour lines, roads, and water bodies. The 'Map Layers' panel on the right is open, showing various map styles. The 'Tracestrack Topo' layer is selected and highlighted in green. Other layers include Standard, CycloSM, Cycle Map, Transport Map, ÖPNVkarte, and Humanitarian. The interface also includes a search bar at the top left, navigation controls on the right, and a scale bar at the bottom left.

© OpenStreetMap contributors. Tiles courtesy of Tracestrack. Website and API terms

Geological Survey Ireland



Geological layers. Most of the same GIS layer data can also be accessed through Geohive/Heritagemaps, which have the added advantage of the OSI baselayers



TOWNLANDS.ie

Irish townlands (baronies, parishes...)

Includes Northern Ireland

Links with OpenStreetMap and Logainm



Irish Townlands



Based on data in [OpenStreetMap](#), here is a list of counties in Ireland.

Click on each county to see baronies, civil parishes and townlands in the respective county.

This page should be updated (roughly) daily. The [OpenStreetMap](#) community is adding more data regularly. [See how much we have done and how much we have left to do](#), [how long it'll take us to finish](#)

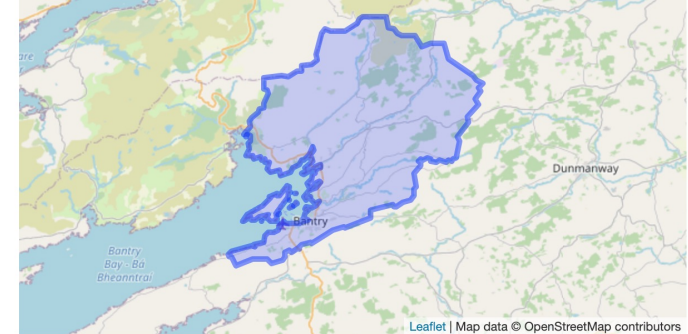
[Alphabetical index of townlands](#)

Ireland

328 baronies, 2,509 civil parishes, 4,563 electoral divisions

Counties

- [Antrim](#). 14 baronies, 81 civil parishes, 136 electoral divisions
- [Armagh](#). 6 baronies, 43 civil parishes, 70 electoral divisions
- [Carlow](#). 7 baronies, 48 civil parishes, 54 electoral divisions



Area

Bantry has an area of 239.7 km² / 59,229.0 acres / 92.5 square miles

Civil Parishes

There are 2 civil parishes in Bantry.

- [Durrus](#) (28 townlands)
- [Kilmocomoge](#) (204 townlands)

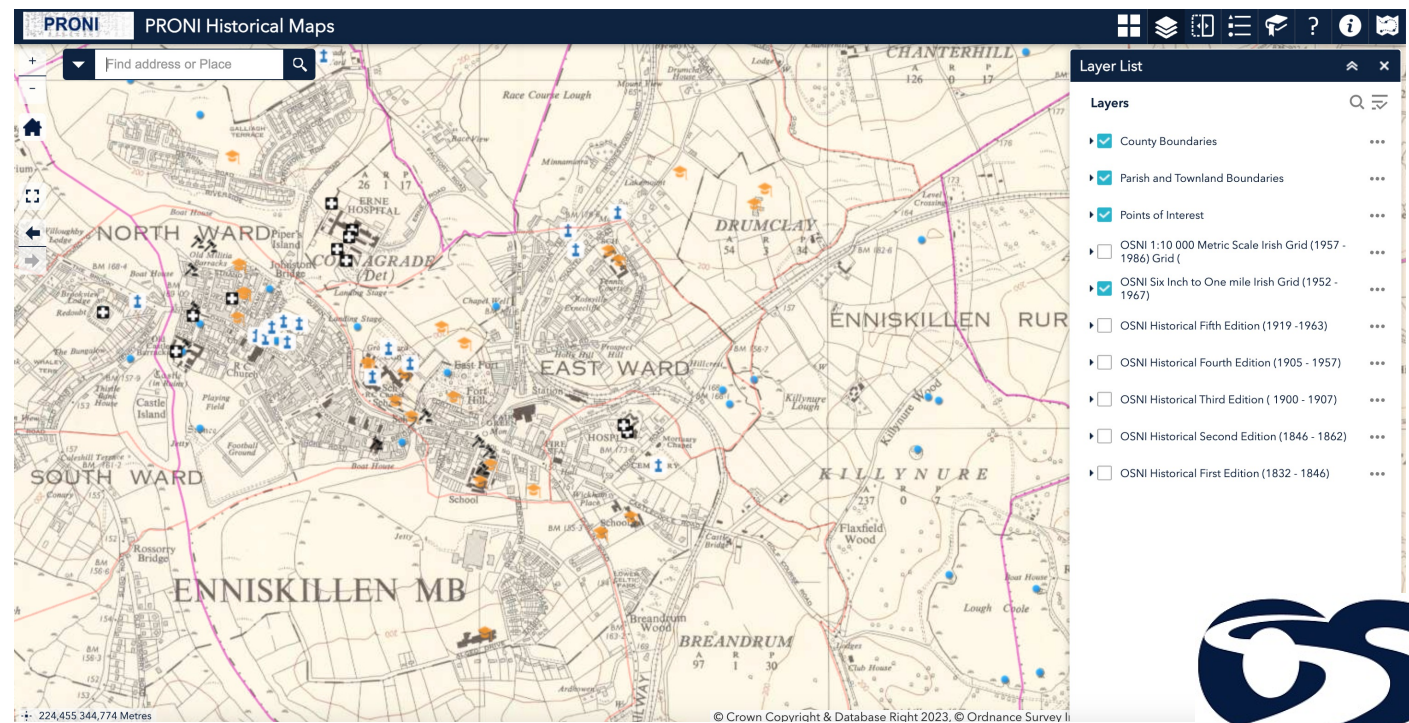
Townlands

There are 195 townlands that we know about in Bantry. This represents 100% of all the area in Bantry.

- [Abbey](#) (*An Mhainistir*) , Kilmocomoge Civil Parish, Barony of Bantry, Co. Cork [33 A](#), [1 R](#), [23 P](#)
- [Ahil Beg](#) (*An Achaill Bheag*) , Kilmocomoge Civil Parish, Barony of Bantry, Co. Cork [261 A](#), [0 R](#), [32 P](#)
- [Ahildotia](#) (*An Achaill Dóite*) , Kilmocomoge Civil Parish, Barony of Bantry, Co. Cork [144 A](#), [3 R](#), [1 P](#)
- [Ahil More](#) (*An Achaill Mhór*) , Kilmocomoge Civil Parish, Barony of Bantry, Co. Cork [496 A](#), [1 R](#), [5 P](#)
- [Ardaturrish Beg](#), Kilmocomoge Civil Parish, Barony of Bantry, Co. Cork [411 A](#), [2 R](#), [35 P](#)
- [Ardaturrish More](#), Kilmocomoge Civil Parish, Barony of Bantry, Co. Cork [466 A](#), [2 R](#), [30 P](#)

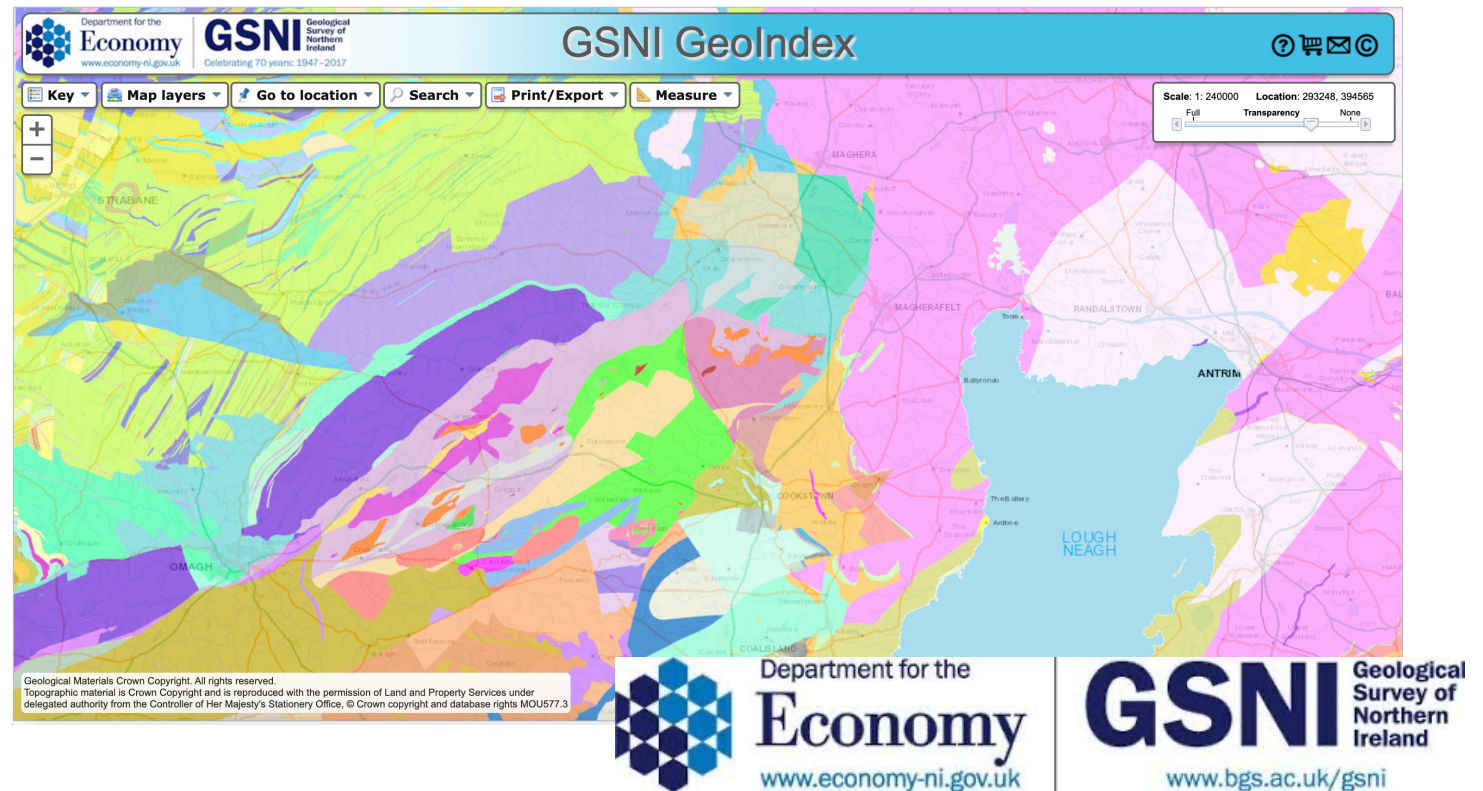
NORTHERN IRELAND - PRONI Historical Maps

<https://apps.spatialni.gov.uk/PRONIApplication/>



NORTHERN IRELAND – GSNI Bedrock Geology

https://mapapps2.bgs.ac.uk/GSNI_Geoindex/home.html

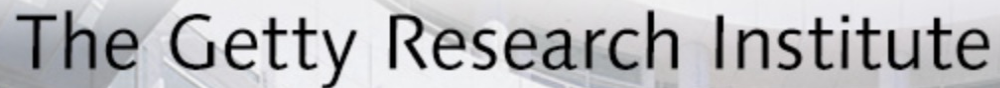




GeoNames

<https://www.geonames.org/>

The GeoNames geographical database covers all countries and contains over eleven million placenames that are available for download free of charge.



The Getty Research Institute

<https://www.getty.edu/research/tools/vocabularies/tgn/index.html>

GADM maps and data

GADM provides maps and spatial data for all countries and their subdivisions. You can browse our maps or download the data to make your own maps.

MAPS

DATA

ABOUT

“GADM wants to map the administrative areas of all [countries](#), at all levels of subdivision. We provide data at high spatial resolutions that includes an extensive set of attributes.”

DAVID RUMSEY Map Collection

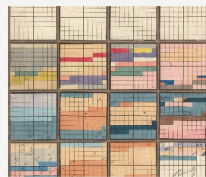
Welcome to the David Rumsey Map Collection. Here you can explore maps through a variety of [viewers](#). Read the [Blog](#) to learn more about collection highlights, such as [Urbano Monte's manuscript world map from 1587](#). Visit the physical collection at the [David Rumsey Map Center](#) at the Stanford University Library. Or take a [virtual tour](#) of the Map Center, which hosts events such as the recent [Barry Lawrence Ruderman Conference on Cartography : Indigenous mapping](#).

The historical map collection has over **126,000 maps and related images online**. The collection includes rare 16th through 21st century maps of [North America](#), [South America](#), [Europe](#), [Asia](#), [Africa](#), [Australia](#), [Antarctica](#), the [Pacific](#), the [Arctic](#), and the [World](#). The online map collection is a searchable database that allows you to make your own journeys into spatial representations of the past. Here you can see the history of cartography through primary sources from 1500 into the 21st century.

NEW: [Random Browse](#) the collection (desktop and tablet only). 250 images at a time. Refresh the link to see 250 more. We invite you to get pleasurably lost.



Views



Timelines



Aerial Photographs



Automobile Maps



Composite Maps



Airlines



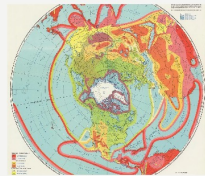
Mountains Rivers



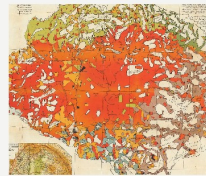
Space



Manuscript



Climate



Ethnographic



Ottoman Maps



World



The Americas



Celestial



Maritime

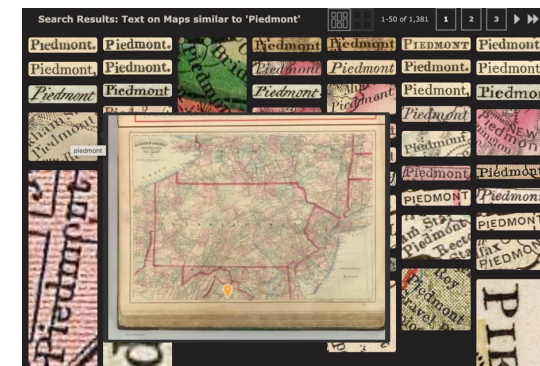


U.S. Civil War



Antarctica



Historical maps
Flexible searching
New! search text on maps



<https://www.davidrumsey.com/>

Fuzzy Gazetteer

Useful for mis-spellings, uncertain handwriting etc.

Place name query: - [New search](#)

Searching 7,205,433 place names world-wide

Available Countries:

Afghanistan

Albania

Algeria

Andorra

Angola

☒ All countries

Feature Types:

Administrative

Hydrographic

Hypsographic

Locality/Area

Populated place

☒ All features

Fuzziness:

Default

 (affects expert parameters below)

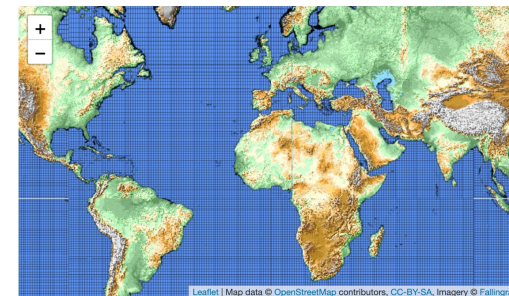
Accuracy: at least

60

 %

Christian Kohlschütter, ISODP Project 2003, FH Hof
[Jürgen Ott](#), assembling 2023

Global Gazetteer Version 2.3



[AA Aruba](#)
[AF Afghanistan](#)
[AL Albania](#)
[AO Angola](#)
[AT Ashmore & Cartier Islands](#)
[AX Akrotiri](#)
[BB Barbados](#)
[BE Belgium](#)
[BH Belize](#)
[BM Burma](#)
[BP Solomon Islands](#)
[BG Bulgaria](#)
[BY Burundi](#)

[AC Antigua & Barbuda](#)
[AG Algeria](#)
[AM Armenia](#)
[AR Argentina](#)
[AU Austria](#)
[AY Antarctica](#)
[BC Botswana](#)
[BE Bahamas, The](#)
[BK Bosnia & Herzegovina](#)
[BN Benin](#)
[BR Brazil](#)
[BV Bouvet Island](#)
[CA Canada](#)

[AE United Arab Emirates](#)
[AJ Azerbaijan](#)
[AN Andorra](#)
[AS Australia](#)
[AV Anguilla](#)
[BA Bahrain](#)
[BD Bermuda](#)
[BG Bangladesh](#)
[BL Bolivia](#)
[BO Belarus](#)
[BT Bhutan](#)
[BX Brunei](#)
[CB Cambodia](#)

Falling Rain

Navigate through countries, alphabetical –
very useful if you know the start of the word

<https://www.fallingrain.com/world/>